

Worship · Serve · Grow

together.



ASBURY
UNITED METHODIST CHURCH
BIRMINGHAM

JULY - SEPTEMBER 2026

A LETTER FROM MIKE

July is the time where pastors either officially continue in leadership or arrive and begin as newly appointed leaders in United Methodist Churches. As you know, our Pastoral Team has been reappointed for another year of leadership at Asbury! We are also adding two important members to our Pastoral Team this month. Rev. Margaret Grubic has already been on staff at Asbury in our Adult Ministries area and will begin to work in discipleship and pastoral care when she returns from maternity leave. Rev. Griffen Cope joins us in July as our Associate Pastor. Griffen is an ordained elder who graduated from Mountain Brook High School, Birmingham-Southern College, and the Divinity School at Duke University. We are thrilled to welcome Griffen and his wife, Marjorie, to Asbury!

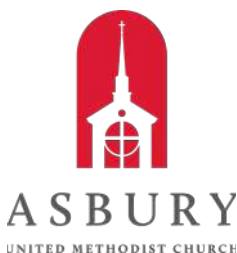


There are several important things to note as you read through this quarter's magazine! On Sunday mornings in the month of July, everyone is invited to attend a special Summer Institute from 9:45 - 10:30 AM in our sanctuary. I will be leading a month-long study on Pastor Magrey deVega's book *Questions Jesus Asked*. These sessions will explore Jesus' questions posed in the gospels and help you answer the question you've likely asked yourself: what am I looking for? We all have questions for God, but growth happens when we turn things around and ask what Jesus wants to know about us. If you're unable to join us in person, each of the Sunday sessions will be live-streamed at youtube.com/asburybham.

August is when things begin to return to normal at Asbury. We will start a new sermon series on August 9th about Taking the High Road as Christians – making the even better choices that are more faithful, kind, and helpful. We will pray over our children and their backpacks as well as for all the children, teachers, faculty, and administrators for our local schools on August 16th. And then we will celebrate Together Sunday on August 23rd as we all make the commitment to practice our prayers, presence, gifts, service, and witness as faithful members in this wonderful church as we commit to Worship, Serve, and Grow Together!

Blessings,
Rev. Mike Holly, *Senior Pastor*

We're glad you're here!



Is Asbury beginning to feel like home?

We invite you to stop by our Next Steps area right after Sunday worship. One of our pastors would love to meet and talk with you about getting connected or becoming a member and what it means to be part of this faith family as we worship, serve, and grow together.

INSIDE THE ISSUE



04

FEATURES

04 Special Events Calendar

- 02 A Letter from Mike
- 10 Wednesdays
- 11 Sundays
- 12 Asbury KiDS
- 13 RESET Student Ministry
- 14 Young Adults
- 15 Adult Ministry/Heart Connection
- 16 Anchor/Support Groups
- 17 Music Ministry
- 18 Missions

SUMMER 2026

EDITOR/DESIGNER
Liz Dial | liz.dial@asburybham.org

COMMUNICATIONS DIRECTOR
Amy Gonzalez | amy.gonzalez@asburybham.org

STAFF PHOTOGRAPHER
Dash Allen | mg.allen@asburybham.org



SPECIAL EVENTS calendar

Events subject to change.
Please confirm dates/times at asburybham.org.

July

01 ANCHOR
02 CLOSED
TUES – THURS
ALL DAY
AUMC
Anchor Community Respite Ministry will be closed in observance of Independence Day.

03 CHURCH OFFICE
CLOSED
FRIDAY
ALL DAY
AUMC
Asbury UMC will be closed in observance of Independence Day

05 SUMMER
INSTITUTE
SUNDAYS IN JULY
9:45 – 10:30 AM
SANCTUARY
Sunday mornings this July from 9:45–10:30 a.m. in the sanctuary, Pastor Mike Holly is leading a Summer Institute on Pastor Magrey deVega’s book *Questions Jesus Asked*. Mike’s session will explore Jesus’ questions posed in the gospels and help you answer the question you’ve likely asked yourself: what am I looking for? If you’re unable to join us in person, the sessions are being live-streamed.

05 YOUNG ADULTS
SUNDAY SCHOOL
SUNDAY
9:45 – 10:45 AM
RM 137
Young Adults: A Sunday-morning Sunday School class meets at 9:45 AM in Room 137. See you there! **This class will conclude on August 2.**

RESET STUDENTS TRIBES
SUNDAYS IN JULY
5:00 – 7:30 PM
AUMC
Our epic annual student showdown is back—every Sunday night in July. Four teams. Endless games. Wild competitions. Red, Blue, Green, Yellow—who will win in 2026? More info on pg. 13.

06 FALL SOCCER
REGISTRATION OPEN
MONDAY
OPEN REGISTRATION
AUMC
Practices begin the week of August 24 and conclude the week of October 3. Practices are held once a week in the late afternoon/evening on Asbury’s Athletic Fields.

08 CREATIVE
10 ART CAMP
WED – FRI
9:30 AM – 12:00 PM
RM 128
A fun and creative kids art camp where young artists explore different materials, learn new techniques, and express their imagination through hands-on projects. **Registration is now closed.**

08 ETIQUETTE
10 CAMP
WED – FRI
12:30 – 3:00 PM
RM 128
This fun and confidence-building camp by Asbury’s Recreation Ministry teaches children practical social skills—like polite conversation, kindness, and proper table manners—through engaging, hands-on activities.

11 MIDDLE SCHOOL
FUN DAY
SATURDAY
ALL DAY
SPLASH ADVENTURE
Grab your shades and your sunscreen! It’s time for a fun-filled excursion at Alabama Splash Adventure!

13 MISSION
MONDAY
MONDAY
9:00 AM – 2:00 PM
OAK MOUNTAIN MISSIONS
Asbury Kids rising 2nd–5th graders are serving at Oak Mountain Missions, an organization providing food, clothing, and other assistance to families in the Greater Birmingham Area. **Registration is now closed.**

14 SOCCER
16 CAMP
TUES – THURS
9:30 AM – 12:00 PM
GYM
Join Asbury’s Recreation Ministry for an energetic soccer camp where players build skills, teamwork, and confidence through fun drills, friendly games, and active indoor play.

14-16 **SCIENCE CAMP**
 TUES – THURS
 12:30 – 3:00 PM
 RM 128 – 134
 Asbury's Recreation Ministry presents an exciting science camp where young explorers discover the wonders of Earth's regions—from icy tundras to lush rainforests and hot deserts—through hands-on experiments and interactive activities.

17 **CROCHET WORKSHOP**
 FRIDAY
 10:00 – 11:30 AM
 RM 120
 Join Asbury's Recreation Ministry to learn the basics of crochet in a hands-on setting. No experience needed and all supplies are provided. Teens and adults welcome!

17-18 **HIGH SCHOOL FUN DAY**
 1:30 FRIDAY –
 6:00 PM SATURDAY
 ATLANTA, GA
 We're headed to Atlanta, Georgia for a Friday night with the Atlanta Braves and a full day of thrills at Six Flags on Saturday!

20 **MISSION MONDAY**
 MONDAY
 9:00 AM – 2:00 PM
 PRODIGAL POTTERY
 Asbury KiDS rising 2nd–5th graders are serving at Prodigal Pottery. Prodigal Pottery is handmade at King's Home by women fleeing domestic abuse. **Registration is now closed.**

21-23 **BASKETBALL CAMP**
 TUES – THURS
 9:30 AM – 12:00 PM
 GYM
 Shoot hoops with Asbury's Recreation Ministry! Campers will learn basketball basics including ball handling, dribbling, shooting, and they'll play games.

MARTIAL ARTS CAMP
 TUES – THURS
 12:30 AM – 2:30 PM
 GYM
 Asbury's Recreation Ministry's Martial Arts Camp introduces kids to the discipline, confidence, and focus of martial arts. They'll learn fundamental techniques in a fun, supportive environment.

23 **YOUNG ADULTS BOWLING NIGHT**
 THURSDAY
 6:00 PM
 LUCKY STRIKE
 Don't be a gutter ball! Come hang out and bowl with the Young Adult Ministry at Lucky Strike!

24 **CROCHET WORKSHOP**
 FRIDAY
 10:00 – 11:30 AM
 RM 120
 Join Asbury's Recreation Ministry to learn the basics of crochet in a hands-on setting. No experience needed and all supplies are provided. Teens and adults welcome!

FUNDAY FRIDAYS
 FRIDAY
 9:00 AM – 2:00 PM
 MCWANE SCIENCE CENTER
 Asbury KiDS will be spending a fun day at McWane Science Center!

28 **YOUNG ADULTS DINNER @ WALDO'S**
 TUESDAYS THRU JULY 28
 6:30 PM
 WALDO'S CHICKEN
 Join us each week at Waldo's Chicken & Beer in Cahaba Heights on Tuesday nights for the rest of the summer! **This event concludes on this date.**

30 **YOUNG ADULTS POTLUCK**
 THURSDAY
 TIME TBD
 THE WHITE'S HOUSE
 Bring a yummy dish to a Young Adults potluck at Robyn and Dan White's house!



August

02 RESET VOLUNTEER TRAINING
SUNDAY
12:00 – 1:30 PM
STUDENT WORSHIP SPACE
Hey RESET volunteers! Join us for a lunch and volunteer training as we get ready for the upcoming school year. Whether you're just getting started or you've been serving for a while, this is a chance to connect, get equipped, and look ahead to what's coming. We'll spend time talking through how we can best support and invest in our students together.

04 BYE COLLEGE STUDENTS
TUESDAY
TIME TBD
LOCATION TBD
Send our college students back to school with a celebration! Stay tuned for more details.

05 CHOIR REHEARSAL RESUMES
WEDNESDAY
7:00 – 8:30 PM
RM 143
Experience the joy of singing and help the choir prepare for weekly performances in 11:00 AM Traditional Worship.

WOW WEDNESDAYS
WEDNESDAY
5:00 – 7:00 PM
VARIOUS LOCATIONS
On Wednesday nights in July, students will gather from 5–7:00 PM to build relationships, play games, hear a devotion, and reflect on our “WOW” moments throughout the week. We'll meet at the church, and/or off-campus.

08 BACK TO SCHOOL PRAYER WALKS
SATURDAY
10:00 AM
AUMC
We are thrilled to have our first back to school prayer walk this year on Saturday, August 8th. Join us as we cover local school campuses in prayer.

09 RESET BACK TO SCHOOL BASH
SUNDAY
5:00 – 7:00 PM
STUDENT WORSHIP SPACE
RESET Students, come celebrate a new school year! We'll have games, snacks, and worship together as we look forward to an awesome year!

13 BOOK CLUB
2ND THURSDAYS
6:30 – 7:30 PM
RM 129
Love to read? The Book Club is a welcoming space for all readers and meaningful conversation! Meets second Thursdays.

14 RESET FALL RETREAT
FRIDAY – SUNDAY
AUGUST 14 – 16
CAMP HARGIS
7th–12th Graders; Fall Retreat 2026 is all about the call—“Here I am, send me” (Isaiah 6:8). Join us at Camp Hargis for a high-energy weekend of crazy games, powerful worship led by Abby and our incredible student band, and discovering what it means to be sent by God. Don't miss it!

16 BACKPACK SUNDAY
SUNDAY
8:30 & 11:00 AM
AUMC
For anyone returning to school, bring your backpacks to worship and we'll bless them! We want to send our students into the new school year with support and love.

16 CONFIRMATION BEGINS
SUNDAY
9:45 – 10:45 AM
AUMC
Confirmation is a year long journey of faith discovery that leads to membership in the UMC. Confirmands meet weekly during the 9:45 AM Sunday school hour.

18 GIGGLES & GRACE
TUES – SAT
22 SALE BEGINS FRIDAY GYM
Asbury Giggles & Grace brings together consignors, volunteers, and shoppers twice a year for a community-centered event that's about more than great deals on children's items. This sale supports local families while funding meaningful ministry work and partnerships. We're committed to keeping quality items in use, supporting those in need, and building connections within our community.

20 YOUNG ADULTS GAME NIGHT
THURSDAY
TIME TBD
ABBY'S HOUSE
Put your game face on for a game night at Abby Rossnagel's place! Stay tuned for more details.

23 TOGETHER SUNDAY

SUNDAY
8:30 AM – 12:00 PM
AUMC

We are Asbury, together. Join us on Together Sunday to celebrate our amazing church family and community.

CONFIRMATION COVENANT SERVICE

SUNDAY
11:00
AUMC

Confirmation is a significant step in the journey of faith. Middle-school students are invited to claim for themselves the names, “Christian” and “United Methodist.” This service marks the beginning of confirmands’ year-long journey.

HOSPITALITY TEAM LUNCH

SUNDAY
12:15 – 2:00 PM
RM 144

Whether you’re already serving or just curious, come connect, be encouraged, and discover how you can help others feel seen, valued, and loved at Asbury.

24 FALL SOCCER PRACTICE

MONDAY
5:00 – 7:00 PM
AUMC ATHLETIC

Asbury Recreation Ministry’s fall soccer season practice begins this week.

26 MIDWEEK SABBATH RESUMES

WEDNESDAY
5:00 – 7:30 PM
AUMC

Adults have Midweek Sabbath with come-and-go opportunities to rest, grow, and focus on wellness. Check out pg. 10 for more information and all Wednesday night offerings.

RESET LIFE GROUPS RESUME

WEDNESDAY
VARIOUS TIMES
VARIOUS LOCATIONS

Life Groups are the heart of RESET. There are age and gender-specific Life Groups for every phase of students’ journeys! Middle School LGs meet in the Youth Space from 6:00–7:30 PM weekly. High School LGs meet off campus at various times.

ASBURY KIDS WED. NIGHT RESUMES

WEDNESDAY
6:00 – 7:30 PM
VARIOUS LOCATIONS

Preschool tykes, elementary kiddos, and preteens experience music, worship, small-group study, and fun through Asbury Kids programming.

26 ENGLISH CLASSES

WEDNESDAYS
6:00 – 7:30 PM
RM TBD

English classes are offered during Mid-Week Sabbath. This ministry provides a wonderful opportunity to welcome people, share God’s love by meeting practical needs, and build relationships. Guests receive grocery support, enjoy a meal and fellowship, and attend English classes.

29 HEART CONNECTION OUTING

SATURDAY
12:30 PM
RED MOUNTAIN THEATRE

Come From Away: this Tony-winning musical is based on a true story about the day the tiny town of Gander, Newfoundland, played host to the world. On September 11, 2001, thirty-eight planes were diverted to the airstrip, bringing thousands of scared international travelers to the sleepy town. But with music, an open bar, and a few language barriers, it becomes a moment for global unity in an uncertain time. Deadline to register is August 21.

YOUNG ADULTS PEPPER PLACE & LUNCH OUT

SATURDAY
10:00 AM
PEPPER PLACE

Young Adults, meet at Pepper Place to walk around the Saturday morning market and get lunch together!



September

01 **DEMENTIA-FRIENDLY CHAPEL**
TUESDAY
1:30 PM
SANCTUARY
Anchor Community Respite Ministry will begin having dementia-friendly chapel services on the first Tuesday of every month.

04 **SHORES FAMILY MISSION TRIP**
07 FRI – MON
LABOR DAY WEEKEND
GULF SHORES
The whole family is welcome on this mission trip to Gulf Shores! See pg. 19 for more details.

09 **WANDERING WEDNESDAY**
WEDNESDAY
6:30 – 7:15 PM
SWEET FROG
For Asbury KiDS 4th & 5th graders. We're headed to Sweet Frog for Wandering Wednesday, a once a month off-campus activity for fun with friends and relationship building.

10 **BOOK CLUB**
2ND THURSDAYS
6:30 – 7:30 PM
RM 129
Love to read? The Book Club is a welcoming space for readers of all levels to come together, explore meaningful books, and connect through conversation. Meets second Thursdays each month.

13 **CONNECTION CLASS WORSHIP**
SUNDAY
9:45 – 10:30 AM
SANCTUARY ANNEX
Led by Rev. Mike Holly and Rev. Robert Mercer, this session explores worship styles.

READY, SET, LEAD
SUNDAY
5:00 PM
SANCTUARY ANNEX
This 3-week leadership course with Mike Holly will encourage people to discover the leader and gifts within them. **Will meet Sep. 13, 20, and 27.**

14 **BASKETBALL & CHEER REG. OPEN**
MONDAY
REGISTRATION OPEN
AUMC
Registration for Asbury Recreation Ministry's basketball and cheer season is open.

19 **YOUNG ADULTS FOOTBALL PARTY**
SATURDAY
TIME TBD
LOCATION TBD
Come cheer on your team with Asbury's Young Adult Ministry!

20 **CONNECTION CLASS SERVE**
SUNDAY
9:45 – 10:30 AM
SANCTUARY ANNEX
Led by Rev. Maggie Dunaway, Angie Gongwer, and Brooke Wolde. This Connection session focuses on Jesus's call to serve, Asbury's mission efforts, and volunteer opportunities.

SURPRISE SUNDAY
SUNDAY
9:45 – 10:45 AM
RMS 212, 214, 215
Asbury KiDS Surprise Sundays have a special surprise theme for the day during the Sunday school hour.

CRMP LUNCH WITH WIL BAILEY
SUNDAY
AFTER WORSHIP
JIM N' NICKS
Join missionary Wil Bailey for lunch and fellowship at Jim n' Nicks after worship!



26 ASBURY SERVES

SATURDAY

9:00 AM – 12:00 PM

VARIOUS LOCATIONS

Asbury Serves events are a great way to serve, show people God's love, and meet new people! You can help several ministry partners with small tasks (like gardening, cleaning, and organizing) so ministries can focus on doing what they do best: helping others. LifeSouth will also be at Asbury's campus and you can donate blood from 9:00 a.m. to 1:00 p.m.

27 CONNECTION CLASS GROW

SUNDAY

9:45 – 10:30 AM

SANCTUARY NARTHEX

Led by Rev. Michael Bowman, this session covers Asbury's vision and values across age groups, the importance of small groups, and connection.

3RD GRADE BIBLE PRESENTATIONS

SUNDAY

11:00 AM

SANCTUARY

Our third graders will be gifted their very own Bible which we will encourage them to bring to Sunday School at 9:45 AM each week.

3RD GRADE FAMILY BIBLE NIGHT

SUNDAY

4:00 – 6:00 PM

RMS 143, 144, LABYRINTH

Join us for some interactive Bible learning and a meal with your 3rd grader and friends. Celebrate this milestone in your 3rd grader's life. Registration required.



wednesdays

Wednesday nights offer a variety of opportunities for everyone to rest, grow, and learn.

TABLE FELLOWSHIP

5:00 – 6:15 PM | GYM

Join us for dinner before Wednesday night activities! Meals and registration will be shared closer to time.

LABYRINTH & SANCTUARY REST

5:00 – 7:30 PM

Do you need a place to rest and regroup? Asbury's Labyrinth Prayer Garden and Sanctuary are open and available for a time of quiet reflection.

FELLOWSHIP & GAMES

5:00 – 7:30 PM | WESLEY HALL

Love to play board games? Have a favorite card game? Join in the fun!

SWEET SPIRIT

5:30 – 7:00 PM | RM 136

Ongoing Bible study for women in their 20's-40's. Facilitator: Melody DiClemente

GROWING IN GRACE

6:15 – 7:00 PM | RM 126

Ongoing Bible study for women in their 30's & 40's. Facilitator: Catherine Pair

DROP-IN SERMON DEEP DIVE

6:00 – 7:15 PM

On Wednesday nights, Asbury pastors will lead a deep-dive class on the current sermon series. First time? No big deal! This class is designed so you can drop in anytime!



we're back!

Wednesday night activities resume August 26!

Asbury Ringers & Chancel Choir rehearsals

AR: 6:00 – 7:00 PM | RM 141

CC: 7:00 – 8:30 PM | RM 143

Check out Wednesday night offerings for kids and students on pgs. 12 & 13!





SUNDAYS

WORSHIP

8:30 & 11:00 AM

Asbury offers Traditional Worship in the Sanctuary at 8:30 and 11:00 AM and Modern Worship at 11:00 AM in Williams Chapel. Nursery care is available for infants through preschoolers. Children's Church is offered for kindergarten through second graders during 8:30 and 11:00 AM worship, except on first Sundays.

Worshiping online? 11:00 AM Traditional and Modern Worship services are live-streamed on YouTube and Facebook (@asburybham) every week.

SUNDAY SCHOOL

9:45-10:45 AM

INFANTS & PRESCHOOL

Located across from Williams Chapel. Nursery care and Bible lesson is available for infants through preschoolers.

KIDS

Kindergarten through 5th grade kids meet in RM 214 for welcome, worship, and Bible lesson. Afterwards, they go to grade-specific classrooms for activities and small-group discussion.

STUDENTS

945
Sixth through eighth grade students meet in RM 115. Ninth through twelfth grade students meet downstairs in RM 102.

CONFIRMATION CLASS

RMS 104-106. Confirmation is a year-long faith journey, typically for sixth graders. Confirmands meet weekly during the 9:45 AM Sunday School hour in the RESET Student Space.

YOUNG ADULTS

RM 131. This group resumes for the summer. All young adults are welcome. **This class will conclude on August 2.**

ADULTS

ADULT SINGLES

RM 129. Age: 55+. For those divorced, widowed, or blissfully unattached. Contact: Lee Ann Wagner at lindywag@gmail.com.

AGAPE

RM 126. Age: 50+. For adults with older children or who are empty nesters. Contact: Elan Feagin at epfeagin@gmail.com.

CHALLENGERS

RM 132. Age: 50+. This class is primarily adults embracing empty nest or retirement. Contact: Janet O'Neil at jhallnews@mac.com.

CROSSROADS

RM 128. Age: 40s and 50s. Couples and adults seeking a rich spiritual life are welcome! Contact: Angel McPhearson at mcphearsonangel@gmail.com.

FOUNDATIONS

RM 127. This class is for young adult couples looking to build their faith foundation together. Contact: Amy Courtney at amy.florine@gmail.com.

FRIENDSHIP

RM 142. Age: 70+. Married, single, or widowed seniors growing together. Contact: Myra Smith at nurse_mas@charter.net.

JOURNEYMEN

RM 144. Age: 60+. For men, women, couples, singles, empty nesters, and grandparents. Contact: Bob Gilbert at rmgilbertjr@aol.com.

LADIES BIBLE STUDY

RM 120. Wives, grandmothers, empty nesters, and single women come together to study God's word. Contact: Ellen Thompson at thompson7835@bellsouth.net.

L.I.G.H.T.

RM 133. Age: 45+. Geared toward couples parenting teens to college-age kids. Contact: Melissa Franklin at mkafo812@gmail.com.

REFLECTIONS

RM 136. This class is for those who love to read and is for all ages and stages in life. Contact: Robyn White at robyn.white@asburybham.org.

SEEKERS

RM 122. Diverse class of empty nesters and retirees. Contact: Mike Northrup at miken@amfirst.org.

YOUNG PROFESSIONALS

RM 138. This class is for individuals looking to build community and deepen their spiritual lives. Contact: Donald Clayton at donaldclayton@gmail.com.

ASBURY KIDS

ASBURY KIDS WEDNESDAY NIGHTS

WEDNESDAYS | RESUMES AUGUST 26

6:00 – 7:30 PM

Preschool tykes, elementary kiddos, and preteens experience music, worship, small-group study, and fun through Asbury Kids programming from 6:00–7:30 p.m.

MISSION MONDAYS

MONDAY | JULY 13 & 20

OAK MOUNTAIN MISSIONS & PRODIGAL POTTERY

2nd–5th graders are serving with Asbury’s incredible missions partners, Oak Mountain Missions and Prodigal Pottery.

FUNDAY FRIDAY

FRIDAY | JULY 24

9:00 – 2:00 PM | MCWANE SCIENCE CENTER

Asbury Kids will be spending a fun day at McWane Science Center!

WANDERING WEDNESDAY

WEDNESDAY | SEPTEMBER 9

6:30 – 7:15 PM | SWEET FROG

For Asbury Kids 4th & 5th graders. We’re headed to Sweet Frog for Wandering Wednesday, a once a month off-campus activity for fun with friends and relationship building.

SURPRISE SUNDAY

SUNDAY | SEPTEMBER 20

9:45 – 10:45 AM | AUMC

Asbury Kids Surprise Sundays have a special surprise theme for the day during the Sunday school hour.

RECREATION MINISTRY CAMPS

ETIQUETTE

July 8–10, 12:30–3:00 PM

Rising 2nd–6th grade | Room 128 | \$75

SOCCER

July 14–16, 9:30 AM–12:00 PM

Rising 2nd–6th grade | Gym | \$75

SCIENCE

July 14–16, 12:30–3:00 PM

Rising 2nd–6th grade | Room 128 | \$75

BASKETBALL

July 21–23, 9:30 AM–12:00 PM

Rising 2nd–6th grade | Gym | \$75

MARTIAL ARTS

July 21–23, 12:30–2:30 PM

Rising 2nd–6th grade | Gym | \$60



RESET

Asbury RESET exists to close the gap between life and faith by showing students how to Know God, Grow in faith, and Go share the Gospel.

STUDENTS

945

9:45 – 10:45 AM | STUDENT WORSHIP SPACE

On Sunday mornings in Student Worship Space (Downstairs, Room 113.), we break into middle and high school classes for a lesson and discussion after a main group game. Middle Schoolers: you're in Room 113 with a discussion-driven class that pairs meaningful conversations about faith with interactive, hands-on activities. High Schoolers: you're in Room 102 working through an immersive, two-year Bible study that takes us through the entire story of Scripture from Genesis to Revelation.

RESET SUNDAY NIGHTS

5:00 – 7:00 PM | STUDENT WORSHIP SPACE

Each week, students eat, play games, and grow together in faith. Whether that's a student-led worship night like UNITED, a game night, a service night, or even a surprise night, this is a great way for all teenagers to grow in community and faith together. Any off-campus excursions will be communicated prior to the event.

LIFE GROUPS

VARIOUS TIMES | VARIOUS LOCATIONS

Life Groups are the heart of RESET. There are age and gender-specific Life Groups for every phase of students' journeys. Middle School LGs meet in the Youth Space from 6–7:30 PM weekly. High School LG's meet off campus at various times. **Life Groups will resume on August 26.**

WOW WEDNESDAYS

WEDNESDAYS IN JULY

5:00 – 7:00 PM | VARIOUS LOCATIONS

Each week, we'll try new activities together and reflect on our WOW moments. Our summer interns will lead a devotional during our time. Arrive in the Student Space. Any excursions will be communicated prior to the event.

TRIBES

5:00 – 7:30 PM | SUNDAY NIGHTS IN JULY

Sunday nights this July are about to get loud. TRIBES returns in 2026 with four teams, high-energy challenges, and a full month of competition from 5–7:30 PM. It's all building toward one goal...claiming the Tribes Trophy and locking in your team's legacy. Four colors enter: Red, Blue, Green, and Yellow. Only one will finish on top. Who's it going to be?

FALL RETREAT

AUGUST 14–16 | CAMP HARGIS

7th–12th Graders; Fall Retreat 2026 is all about the call—"Here I am, send me" (Isaiah 6:8). Join us at Camp Hargis for a high-energy weekend of crazy games, powerful worship led by Abby and our incredible student band, and discovering what it means to be sent by God. Don't miss it!



To learn more about RESET Student Ministry, contact Director Rev. Austin Lerner-Gay or scan the QR code.



young adults



BOWLING

THURSDAY, JULY 23 | 6:00 PM

Come test your bowling chops at Lucky Strike in July!

FELLOWSHIP AT WALDO'S

TUESDAYS THRU JULY 28 | 6:30 PM

Join us each week at Waldo's Chicken & Beer in Cahaba Heights on Tuesday nights for the rest of the summer!

POTLUCK DINNER

THURSDAY, JULY 30 | THE WHITE'S HOUSE

Bring a yummy dish to a Young Adults potluck at Robyn and Dan White's house!

BYE COLLEGE STUDENTS!

TUESDAY, AUGUST 4 | LOCATION TBD

Send our college students back to school with a celebration!

GAME NIGHT

THURSDAY, AUGUST 6 | ABBY ROSSNAGEL'S PLACE

Put your game face on for a game night at Abby's!

PEPPER PLACE & LUNCH

SATURDAY, AUGUST 29 | PEPPER PLACE

We'll meet at 10:00 AM at Pepper Place Market and have lunch!

COLLEGE FOOTBALL WATCH PARTY

SATURDAY, SEPTMEBER 19 | LOCATION TBD

Cheer on your team!



adults

BIBLE STUDIES & GROUPS

THE SEARCHERS

10:00 AM – NOON | RM 122

This men's Bible study meets each Thursday. Learn and know God more intimately through the study of His Holy Word. Facilitator: Larry Beaury.

BY FAITH

6:00 – 7:00 PM | RM 126

This women's Bible study meets the first and third Monday of each month for fellowship and study. Facilitator: Elan Feagin.

UMW NAOMI CIRCLE

9:30 – 11:30 AM | RM 128

United Methodist Women circle meets the first Tuesday of each month. Circle Leader: Lori Cheney.

UMW MARTHA CIRCLE

5:00 PM | RM 133

United Methodist Women circle meets the second Tuesday of each month. Circle Leader: June Griffin.

UMW ESTHER CIRCLE

9:30 – 11:00 AM | RM 120

United Methodist Women circle meets the third Monday of each month. Circle Leader: Joan Chandler.

UMW CRAFT DAY

9:30 – 11:30 AM | RM 120

All three UMW circles meet the second Monday of each month for hands-on mission work.

LADIES OF LIGHT

1:00 – 2:30 PM | RM 128 & 130

This women's Bible study meets every Wednesday. Study God's word and mirror His character to keep our lights burning for others. Facilitator: Kim Nolen.

LOVING HANDS KNITTING

10:00 AM – 12:00 PM | RM 120

This congregational care ministry meets every Friday to knit, crochet, and fellowship.

LESSLEY BIBLE STUDY

10:00 AM – 12:00 PM | RM 128

This women's Bible study meets every Wednesday. Overcome obstacles and focus on being your best self with God's help. Facilitator: Kim Lessley.

ROOTED

7:00 – 8:00 AM | RM 136

This men's Bible study meets every Friday. Fellowship and study with scriptural roots that help us stay grounded. Facilitator: KC Nolen.

MEAT & GREET

6:00 – 8:00 PM | SCOUT HUT

This casual, relaxed men's fellowship meets every Thursday. Bring meat to grill. Facilitator: Dave Driscoll.

PICKUP BASKETBALL

6:30 – 8:00 PM | GYM

Guys (19+) are invited to play basketball on Monday nights in the gym.

PICKLEBALL

2:30 – 4:30 PM | GYM

For all ages. Play is every Monday, Tuesday, Thursday. Contact Nancy Hollaway at nhollaway54@gmail.com.

CHAIR YOGA

9:00 – 10:15 AM | SANCTUARY

Increase balance, flexibility, & agility with this therapeutic class that meets each Monday. Bring your own mat. Cost: \$5.00 per class.

COMMUNITY GROUPS

VARIOUS TIMES & LOCATIONS

Community Groups are trusted spaces where people can bring their questions about God, the Bible, and their own lives. Some groups meet at Asbury, while others gather off-campus throughout the greater Birmingham area.



heart connection

UPCOMING OUTINGS

**COME FROM AWAY
RED MOUNTAIN THEATRE
AUGUST 29 | 12:15 PM**

We're going to see the Tony Award-winning musical *Come From Away* at Red Mountain Theatre! Deadline to register is August 21.

**LUNCH BUNCH
JEFF STATE CULINARY SCHOOL
SEPTEMBER DATE TBD**

We'll be dining at the Jeff State Culinary School. Stay tuned for more details!



ANCHOR COMMUNITY RESPITE MINISTRY



Anchor Community Respite Ministry provides fellowship and stimulation to people who are living with memory loss. Anchor operates every Tuesday, Wednesday, and Thursday from 10:00 AM to 2:00 PM at Asbury UMC.

The memory-loss program gives care partners a break each week to run errands, visit with friends, and rest. Care partners can participate in a monthly support group (which meets the first and third Thursday of each month) to share ideas and concerns with other care partners, as well as learn more from memory loss professionals. Care partners are invited to call and schedule a tour of the Respite Care Center prior to enrollment.

Volunteer opportunities: You don't need any special skills to volunteer at Anchor, just a willingness to love and be a friend! Anchor will be closed June 30 - July 2 for Independence Day.



DEMENTIA-FRIENDLY CHAPEL





1:30 PM | SANCTUARY | STARTS SEPTEMBER 1

Anchor Community Respite Ministry will be having dementia-friendly chapel services on the first Tuesday of every month.

SUPPORT GROUPS

Asbury offers several support groups for those dealing with grief, addiction, being a family member of someone struggling with substance abuse, being a caregiver, and more. Scan the QR code to learn about all of our offerings.



 <p>UNITED COUNSELING</p> <p>United Counseling provides faith-based professional counseling for adults, couples, and families.</p> <hr/> <p>In-person sessions available at Asbury by appointment only.</p> <hr/> <p>Counselor: Steve Sweatt, LPC-S/LMFT</p>	 <p>"HEALING HEARTS" SPOUSAL LOSS GRIEF SUPPORT</p> <p>A 10-week support group for those who have recently lost a spouse. Meets each spring and fall.</p> <hr/> <p>Tuesdays, 12:30 - 2:00 PM Please register.</p> <hr/> <p>Facilitator: Sunny Gilliam/ Community Grief Support</p>	 <p>CAREGIVER SUPPORT</p> <p>This ongoing group offers comfort and support for those caring for someone with memory loss due to dementia, Alzheimer's, or stroke.</p> <hr/> <p>1st & 3rd Thursdays, 1:00 - 2:00 PM Room 133</p> <hr/> <p>Facilitator: Rev. Maggie Dunaway</p>	 <p>ALCOHOLICS ANONYMOUS</p> <p>Alcoholics Anonymous is a global peer-led mutual aid fellowship dedicated to abstinence-based recovery from alcoholism through its spiritually-inclined twelve-step program.</p> <hr/> <p>Sundays, Tuesdays, Thursdays 6:30 - 7:30 PM Room 120</p>
--	--	--	--

music ministry

CHANCEL CHOIR REHEARSAL

7:00 – 8:30 PM | WEDNESDAYS | RM 143

Experience the joy of singing and help the choir prepare for weekly performances in 11:00 AM Traditional Worship. Rehearsals resume August 5.

ASBURY RINGERS REHEARSAL

6:00 – 7:00 PM | WEDNESDAYS | RM 141

Do you read music? Try your hand at ringing handbells. Asbury Ringers plays occasionally in Traditional Worship. **Rehearsals resume August 19.**

ASBURY MUSIC CONSERVATORY

VARIED TIMES | MUSIC SUITE

Asbury offers voice and piano lessons for students of all ages.

Contact: Nancy Beard
(nancy.beard@asburybham.org)

MODERN WORSHIP REHEARSAL

8:30 AM | SUNDAYS | WILLIAMS CHAPEL

Asbury's Modern Worship is open to anyone who is excited to serve. If you play an instrument, sing, or if you are interested in our live stream, there is a place for you! Rehearsals for those who are scheduled that week are at 8:30 AM before service at 11:00 AM.

Contact: Jeremiah Toole
(jeremiah.toole@asburybham.org)

ORCHESTRA REHEARSAL

10:10 AM | SUNDAYS | SANCTUARY

The Asbury Orchestra rehearses each Sunday morning at 10:10 AM and plays in Traditional Worship.

Contact: Justin Ward
(justin.p.ward@gmail.com)



To learn more about Asbury's Music Ministry or how to get involved, contact Music Director Nancy Beard (nancy.beard@asburybham.org) or scan the QR code.



MISSIONS IN ACTION

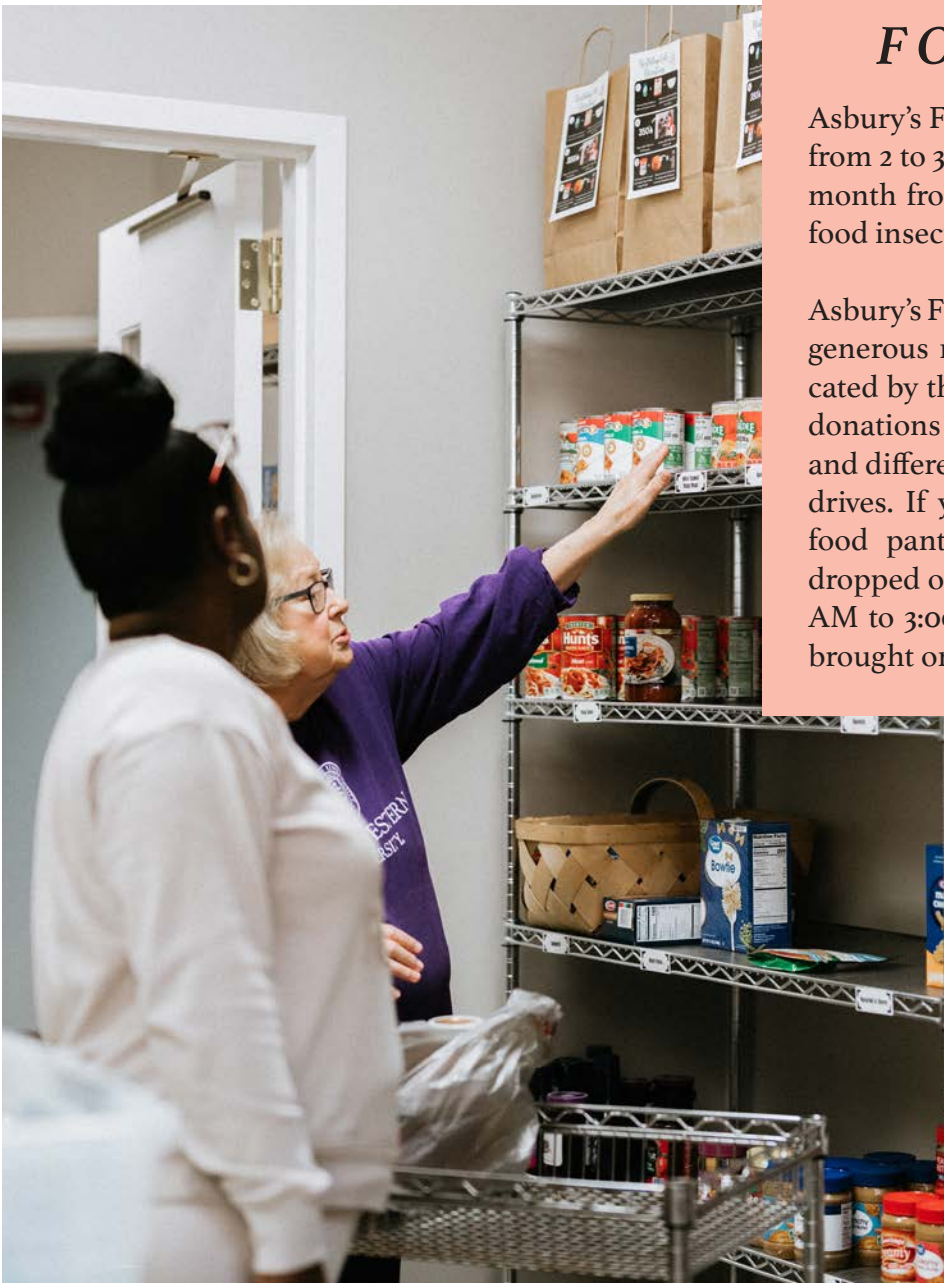
When Asbury UMC was established in 1986, its founding members and clergy decided that on top of the 10% it gives to The United Methodist Church for ministries and outreach, Asbury would give 10% more to Birmingham and its community partners. Nearly 40 years later, Missions in Action, a church member-led committee at Asbury, identifies organizations that are serving as the hands and feet of Christ and allocates money you put in the offering plate each week in worship.

We urge you to learn more about the programs Asbury backs and choose one to support. Find out how you and your family can make a difference, whether by volunteering, making a financial contribution, or simply praying for the individuals affiliated with and impacted by each ministry.

FOOD PANTRY

Asbury's Food Pantry is open every Wednesday from 2 to 3:30 PM and the first Saturday of each month from 12:30 to 2:00 PM to anyone facing food insecurity.

Asbury's Food Pantry is solely operated through generous monetary donations and funds allocated by the Missions in Action program. Food donations are provided by Asbury members and different community groups that have food drives. If you would like to make a donation, food pantry items (non-perishables) can be dropped off outside the pantry doors from 9:00 AM to 3:00 PM, Monday through Saturday, or brought on Sunday mornings.



To sign up for a specific mission event or for more information on Asbury Missions, contact Brooke Wolde (brooke.wolde@asburybham.org) or scan the QR code.

missions of the month

JUL

MISSION BULGARIA

Join us for Christmas in July as we pack 500 shoeboxes for Mission Bulgaria! We will be filling boxes to show the Roma Children of Bulgaria God's love and provision on Christmas day! Be a part by filling shoe boxes or helping organize donated boxes. We cannot do this without you! Find your cards outside of worship throughout the month of July. Please return packed shoe boxes by August 2nd.

Interested in taking a trip to Bulgaria? We will be hosting a Mission Bulgaria Mission Trip Interest meeting on July 12th at 4:00 PM.



AUG

BACK TO SCHOOL

We are thrilled to have our first back to school prayer walk this year on Saturday, August 8th. Join us as we cover local school campuses in prayer.

Prayer Walk Signup:



Know a teacher who could use some extra encouragement? We will be sponsoring a few teachers this year. Nominate a teacher to be one of our 2026–2027 Classrooms of the Year.

Nominate Teachers Here:



We will be sharing a meal with our neighbors at Church of the Reconciler on August 2. If you are interested in donating sliced melon, plates, napkins, or cookies for dessert, please email Missions Coordinator Brooke Wolde at brooke.wolde@asburybham.org. If you are available to help serve, we would love to have you join us!

SEP

CRMP VISIT, ASBURY SERVES, SHORES

On September 20, everyone is welcome to join missionary Wil Bailey from Costa Rica Mission Projects for lunch at Jim n' Nicks following worship!

Save the date for the next Asbury Serves on Saturday, Sept. 26. From 9:00 AM to noon, you can help several ministry partners with small tasks (like gardening, cleaning, and organizing) so ministries can focus on doing what they do best: helping others. If you have a tight timeline or need to stay close to home, LifeSouth will be at Asbury's campus and you can donate blood from 9:00 AM-1:00 PM

Stay tuned for a list of participating mission partners, tasks, and registration!

Shores is a mission trip designed for families with children of all ages to serve together. Experiencing faith inaction is a vital part of helping children grow and develop their own faith.



we are asbury
together